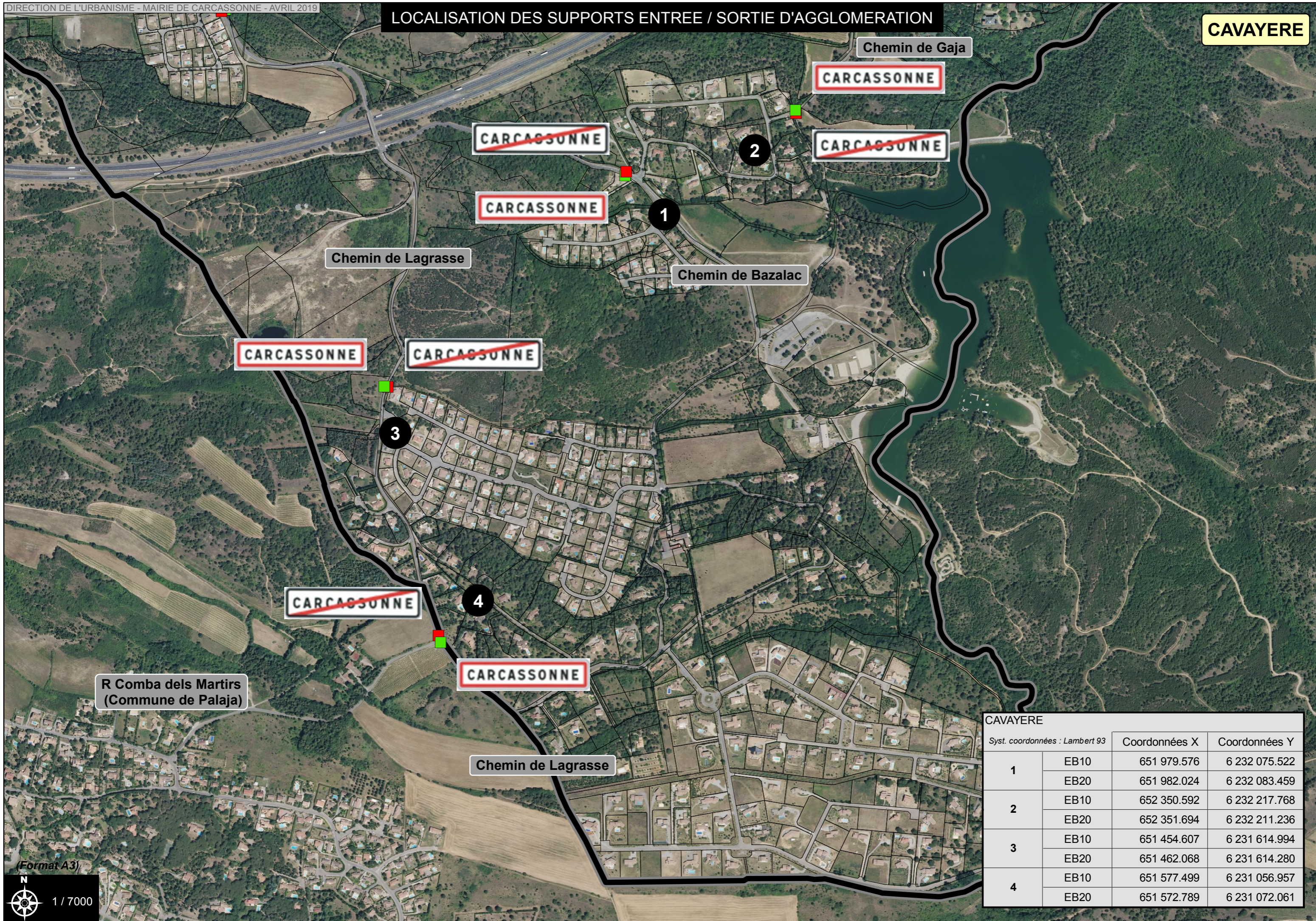


LOCALISATION DES SUPPORTS ENTREE / SORTIE D'AGGLOMERATION

CAVAYERE



| CAVAYERE | | | |
|--------------------------------|------|---------------|---------------|
| Syst. coordonnées : Lambert 93 | | Coordonnées X | Coordonnées Y |
| 1 | EB10 | 651 979.576 | 6 232 075.522 |
| | EB20 | 651 982.024 | 6 232 083.459 |
| 2 | EB10 | 652 350.592 | 6 232 217.768 |
| | EB20 | 652 351.694 | 6 232 211.236 |
| 3 | EB10 | 651 454.607 | 6 231 614.994 |
| | EB20 | 651 462.068 | 6 231 614.280 |
| 4 | EB10 | 651 577.499 | 6 231 056.957 |
| | EB20 | 651 572.789 | 6 231 072.061 |